

PARIVARTAN

“SOCH BADLO,
KHUDKO BADLO,
DUNIYA BADLO”

— Sammodi —



Hope ^{to} → Freedom

Are You
Living your

DREAM



COST OF Living*

2022

Rs. 1,00,000

2000

Rs. 10,000

1980

Rs. 1,000

1960

Rs. 100

**approximate monthly household expense*



**No Luxuries,
Only Necessities**



40 Years of ACTIVE INCOME

No Work

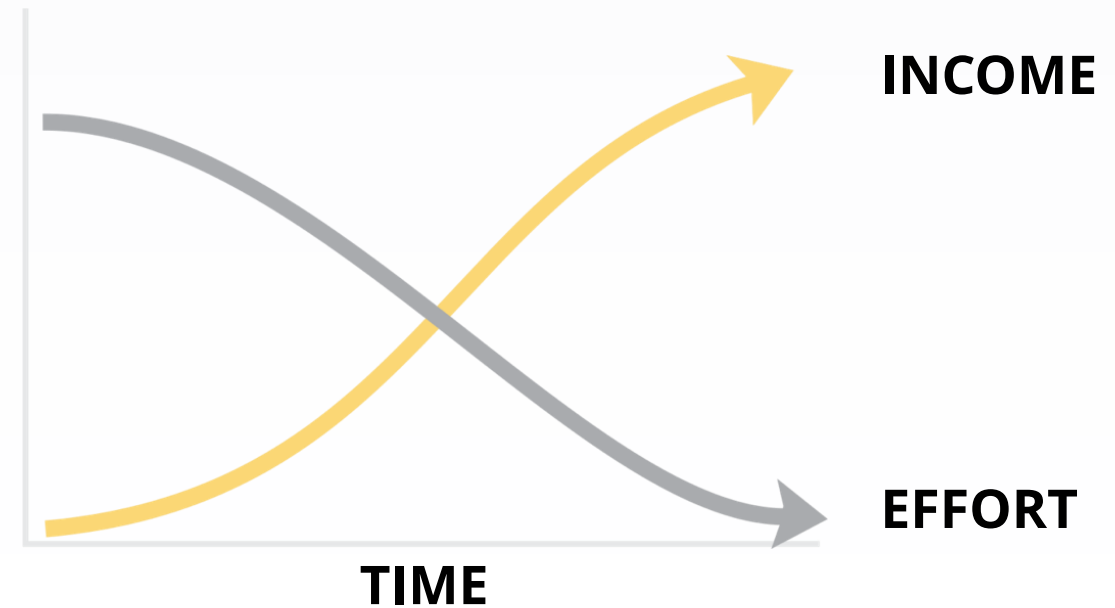
No Income

Employees | Self Employed (Shopkeepers) |
Professionals (Doctors, CAs etc.)

Working with
Modicare

2 - 5 Years

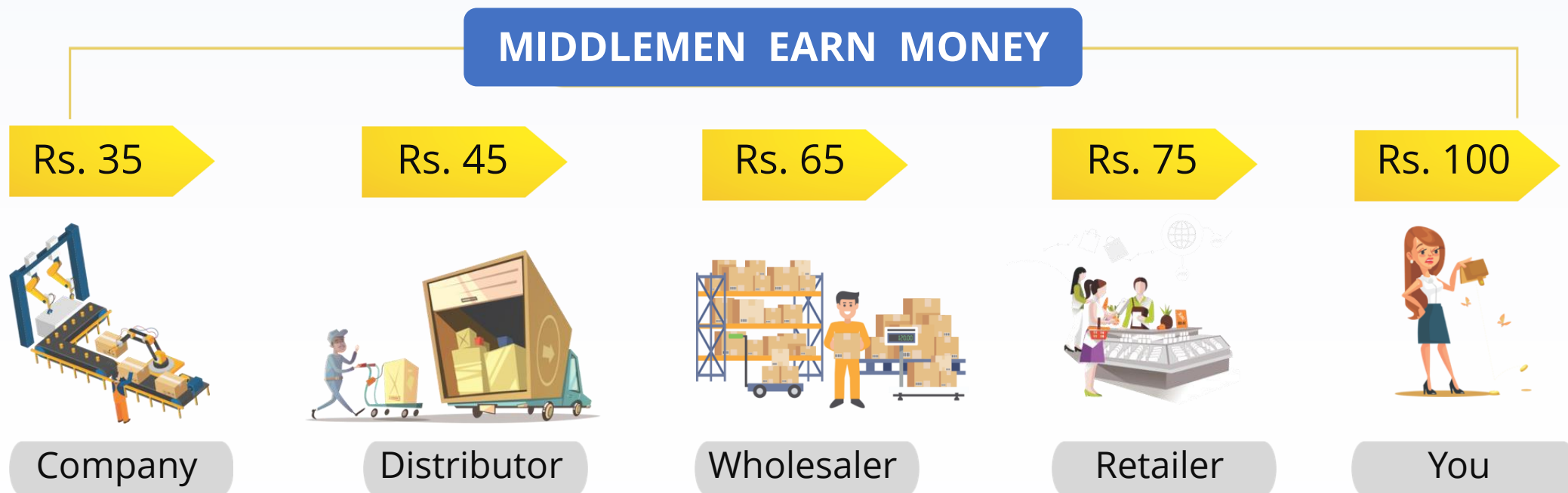
AZADI PLAN



Some ways to earn passive Income: Write a best-selling book | Record a hit song | Investments | Direct Selling

**Income earned is directly proportional to the efforts put in , however your chances to earn more is when you maintain your stable business structure*

Traditional v/s Direct Selling



PROMOTIONS

MONEY SAVED = BONUS INCENTIVES

You earn money



Benefits **OF** Direct Selling



**Low
Investment**



Low Risk



**No Premises/
Manpower
Required**



**Business for
generations**



**Transferable
Business**



**No Previous
Experiences Required**



**Passive
Income**



**Part Time
Business**



India's **FIRST** Direct
Selling Company
Started in the **Year**

1996

by
Mr. Samir Modi





Transforming Lives for over 25 Years

- ✓ **Started in 1996**, Part of the **Multi Billion Dollar Modi Enterprises** (Spread over 120+ countries)
- ✓ **One of the Fastest** Growing Direct Selling company
- ✓ **Rewarding & Attractive** Business Opportunity
- ✓ Winner of Various **Prestigious Awards**
- ✓ Founding Member of **Indian Direct Selling Association (IDSA)**

**Leading Direct Selling Company completing 25 Years....
Success continues**



Our Legacy Story



RAI BAHADUR GUJARMAL MODI

VISIONARY & NATION BUILDER

1933 - 1972

- ✓ Started Modi Enterprises in 1933
- ✓ Set up 27 Different Industries
- ✓ Awarded with Prestigious Awards



KK MODI

ASTUTE ENTREPRENEUR

1961 - 2019

- ✓ Scaled Modi Enterprises to greater heights
- ✓ 2.8 Billion Global Revenue
- ✓ International Collaboration
- ✓ Presence in 120+ Countries

Our Legacy Story

Dr. (Mrs) BINA MODI

Iconic Women Leader

- ✓ **Plays a key role in aligning the** core leadership team towards the Group's goals
- ✓ **A Successful** entrepreneur **herself** built several renowned brands
- ✓ **Served Significant role as** Head of Family Council for Modi Enterprises
- ✓ **Awarded the "Women of the Decade" in Business & Leadership 2018 by Women**



CHAIRPERSON
Modi Enterprises

Our Legacy Story

SAMIR MODI

Revolutionary Leader

- ✓ **Founder & Managing Director**
Modicare Ltd & Colorbar Cosmetics
- ✓ **President of** Twenty-Four Seven
Retail Store Pvt Ltd
- ✓ **Headed Various Industry**
Bodies
- ✓ **NACS Asia Pacific Committee** (National
Association of Convenience Stores)
- ✓ **President of the** Confederation of Asia Pacific
Chambers of Commerce & Industry (CACCI)



**Transforming the lives of millions of direct
sellers and clocking strong momentum**

Modicare Scale Today



1800 Crs
Sales



55 Lakhs
Direct Sellers



10,000
New Joiners/Day



5,000
Towns



5 Lakh
Sq Ft Warehouses/Offices



17,000
Pin Codes Serviced



15,000+
Distributor Points

Modicare Product Range

These Products will
help you get
TRUE AZADI



**Nutrition, Health
& Wellness**



Colour Cosmetics



Skin Care



Food & Beverages



Auto Care



Personal Care



Laundry Care



Home Care



Agri



Lifestyle



Jewellery



Tech



SM Watches



Divine

14 MRP is Incl. of all taxes
As on 3rd July 2021

Images shown are for illustration purpose only.

SAMIR MODI GLOBAL PLAN



- ✓ One of the best plan in the industry – Up to 62% payouts of company's monthly Group Business Volume
- ✓ Low Investment
- ✓ Easy to Understand, Easy to Duplicate
- ✓ International Quality Products
- ✓ 100% Satisfaction Guarantee *
- ✓ Training System – Success Principles by Modicare

* As per company Policy. Conditions Apply



12 AREAS OF LIFELONG INCOME

01

**Retail Profit
UPTO 20%**

02

**Samir Modi Super
Bonus (3% BV Pool)**

03

**Performance Bonus
(5% - 11%)**

04

**Director Bonus
(16% BV Pool)**

Lifestyle Bonus

05

**Bike Bonus
(3% BV Pool)**

06

**National Travel
Fund
(4% BV Pool)**

07

**World Travel Fund
(3% BV Pool)**

08

**Car Fund
(4% BV Pool)**

09

**House Bonus (2% BV
Pool)**

10

**Leadership Bonus
(15% BV Pool)**

11

**Black Diamond
Bonus
(0.7% BV Pool)**

12

**Red Diamond Bonus
(0.3% BV Pool)**

RETAIL PROFIT

**Benefits on self
consumption**



BENEFITS ON SELF CONSUMPTION

1. Retail Profit **up to 20%**

- ✓ You save money on every purchase for personal consumption
- ✓ You earn a retail profit on sales
- ✓ Markup of up to 20% on CP



* Conditions Apply. For Details See SMGP Plan Booklet

BENEFITS ON SELF CONSUMPTION

2. Samir Modi **SUPER**

Bonus

3% BV POOL

Promotes the Golden Behavior of Self Use

Eligibility:

- ✓ Consultant (5%) and Consultant (8%)
- ✓ Do PPV ≥ 60
- ✓ Valid Directors are not eligible

60 PPV

$$\text{SMSB} = \frac{\text{3\% of Company's Monthly BV}}{\text{Total Number of SMSB Qualifiers}}$$

BENEFITS ON SELF CONSUMPTION

Loyalty Rewards Program

“Monthly Gift Voucher” on purchase of Modicare core products - **Instant Rewards**

- ✓ Do 30 PPVs get Gift Voucher worth Rs. 200/-
- ✓ Do 60 PPVs get Gift Voucher worth Rs. 600/-
- ✓ Do 90 PPVs get Gift Voucher worth Rs. 900/-
- ✓ Do 120 PPVs get Gift Voucher worth Rs. 1200/-

The voucher can be redeemed by the 28th of next month

To redeem a voucher minimum 30 PPV is required

The last date to complete Loyalty Billing for Existing Consultants is the 28th of the Month and for New Consultants it's the 30th/31st



BENEFITS ON SELF CONSUMPTION

NEW JOINEE & REPURCHASE PROGRAM

Validity for NJs: Full month for the month of Joining

Validity Re Purchase: 1st – 23rd

- ✓ **Buy CP 1000/-** Get Free products worth up to Rs.100/-
- ✓ **Buy CP 2000/-** Get Free products worth up to Rs 200/-
- ✓ **Buy CP 3000/-** Get Free products worth Up to Rs. 300/-
- ✓ **Buy CP 5000/-** Get Free Products worth up to Rs. 500/-

(Any Slab can be purchased twice up to a maximum CP of Rs. 11,000 per month per consultant)

CP = Consultant Price

BENEFITS ON SELF CONSUMPTION

60 PV CLUB

How can you qualify?

Do a minimum of 60 PPV & get multiple Tickets as below For every 60 PV completed between

- ✓ 1st – 10th- Get 3 Tickets
- ✓ 11th – 20th get 2 Tickets

Rewards: 2000 Winners get Modicare Products worth up to Rs 2000 at Consultant Price

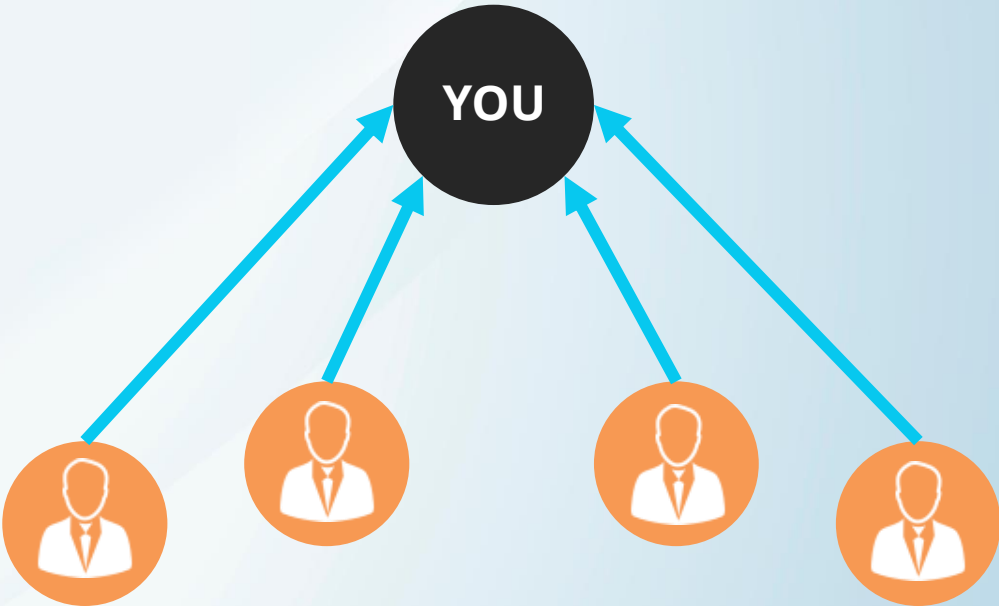
Not valid for Director & above

5% – 11%

Performance Bonus

You Not Only Earn on Your Personal Purchase But on Group Business Volume of Your Frontlines Also.

Performance Bonus LEVEL	GPV Range
Consultant (5%)	60 to < 300
Consultant (8%)	300 to < 600
Consultant (10%)	600 < 900
Consultant (11%)	900 < 1200
Director (11%)	>= 1200



YOUR FRONTLINES

* Conditions Apply. For Details See SMGP Plan Booklet

5% – 11%

Performance Bonus

You Not Only Earn on Your Personal Purchase But on Group Business Volume of Your Frontlines Also.

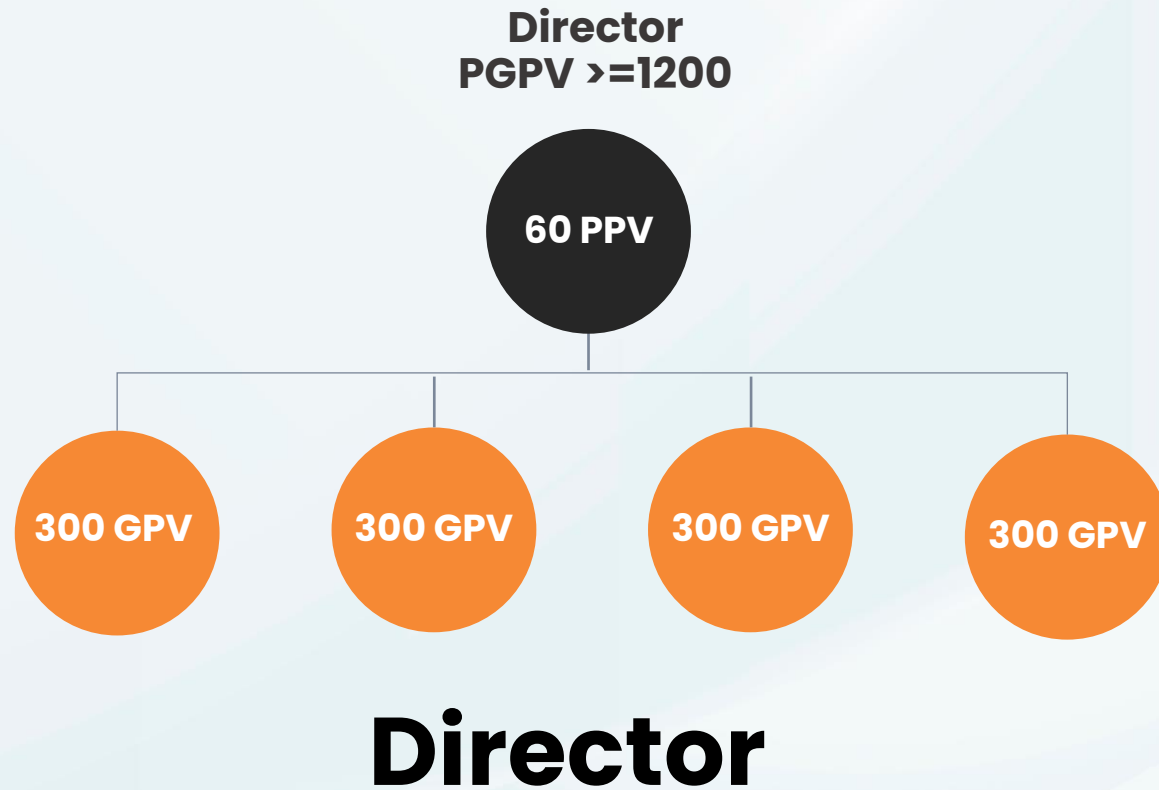
On Frontline’s Group PV

	On Your PPV	Consultant (0%)	Consultant (5%)	Consultant (8%)	Consultant (10%)	Consultant (11%)
Consultant (5%)	5%	5%	-			
Consultant (8%)	8%	8%	3%			
Consultant (10%)	10%	10%	5%	2%		
Consultant (11%)	11%	11%	6%	3%	1%	--
Director & Above (11%)	11%	11%	6%	3%	1%	--

* Conditions Apply. For Details See SMGP Plan Booklet

FIRST MAJOR MILESTONE

IN YOUR AZADI JOURNEY



4. Director Bonus

- ✓ 16% BV Pool
- ✓ Eligibility: All Directors & Higher
- ✓ Paid Monthly

* Conditions Apply. For Details See SMGP Plan Booklet



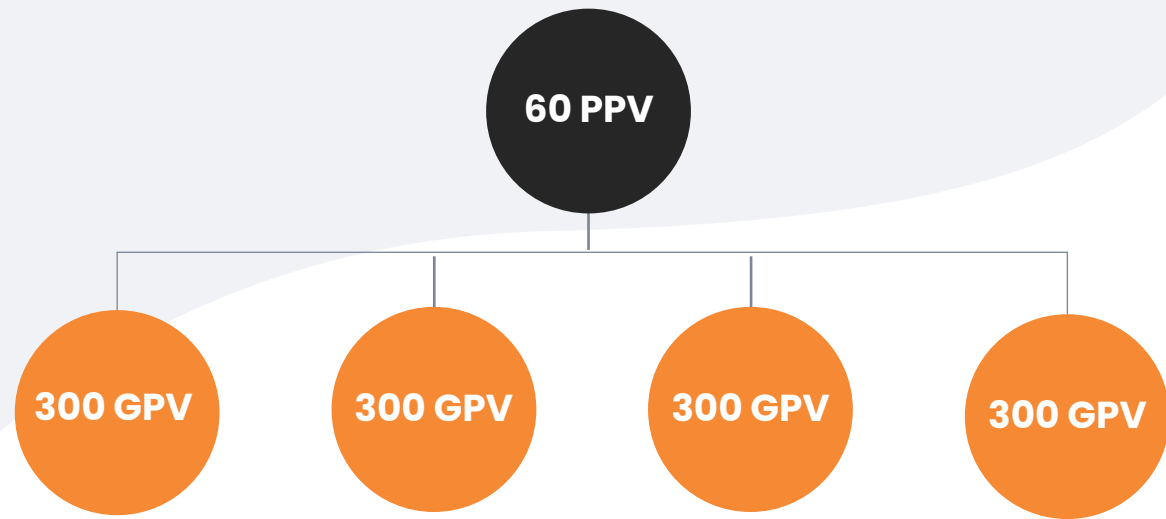
Lifestyle **Bonuses**



Bike Bonus

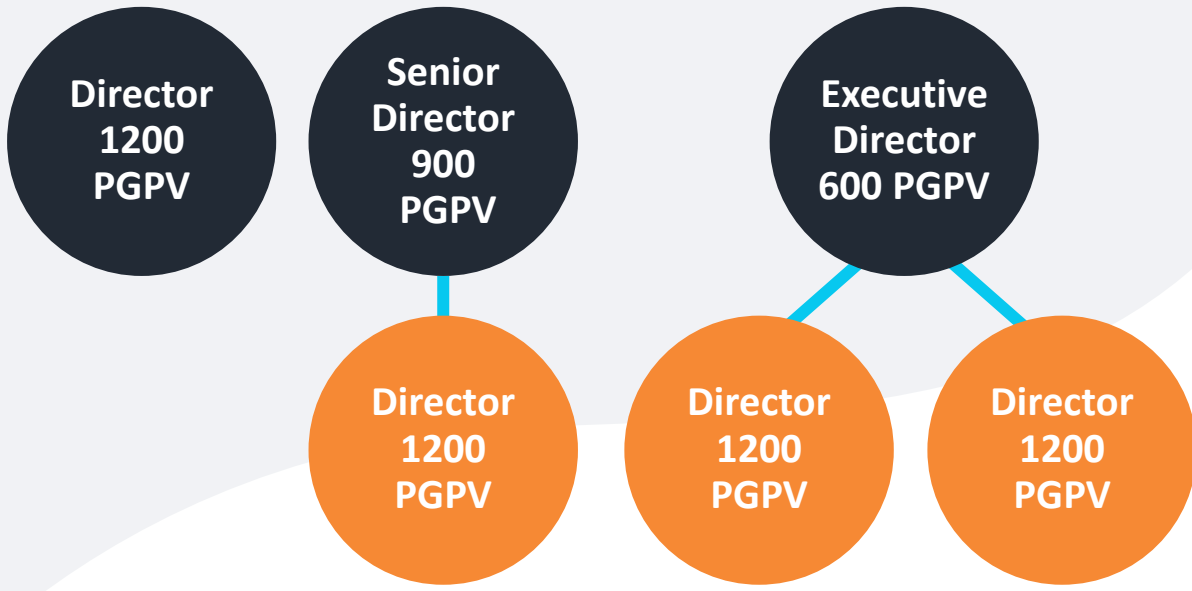
- ✓ 3% BV Pool
- ✓ Paid Monthly to PAT Director:

Director
PGPV ≥ 1200



National Travel Fund

- ✓ **4% BV Pool**
- ✓ **Paid Monthly to:**



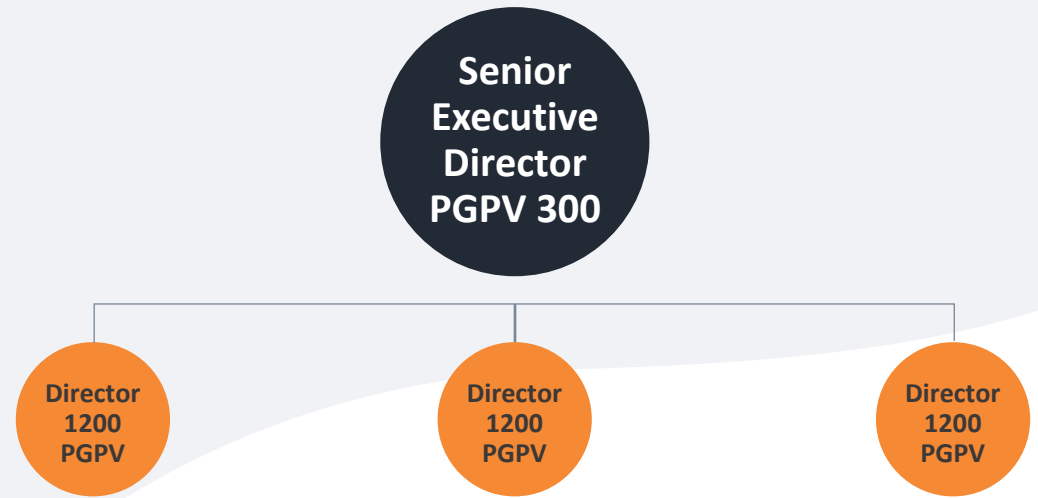
* Conditions Apply. For Details See SMGP Plan Booklet



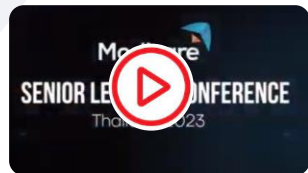
Images shown are for illustration purpose only

World Travel Fund

- ✓ 3% BV Pool
- ✓ Paid to Senior Executive Director and Above



Monthly Capping Rs. 40,000/-



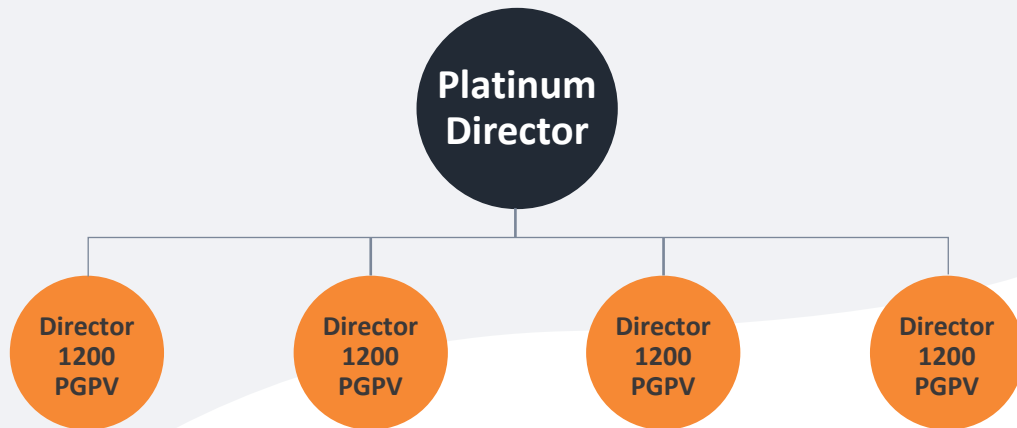
** Conditions Apply. For Details See SMGP Plan Booklet*



Images shown are for illustration purpose only

Car Fund

- ✓ **4% BV Pool**
- ✓ **Paid to Platinum and above**



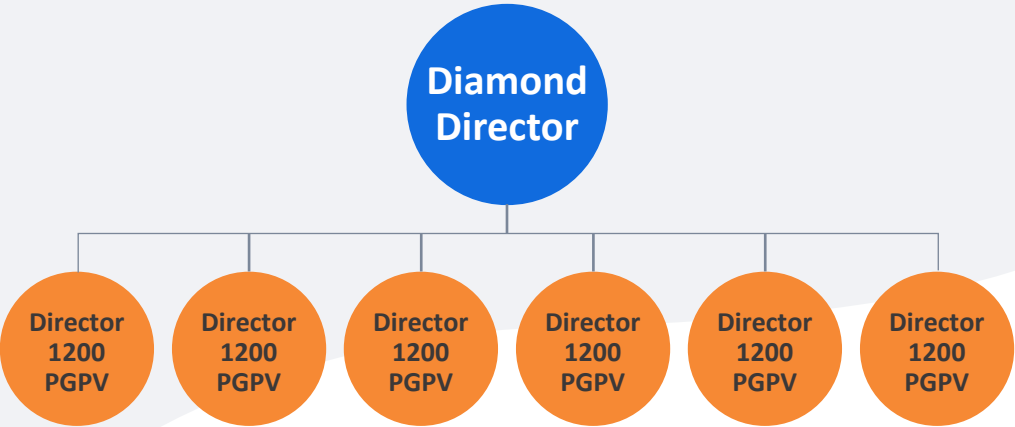
Monthly Capping Rs. 50,000/-

* Conditions Apply. For Details See SMGP Plan Booklet



House Bonus

- ✓ **2% BV Pool**
- ✓ **Paid to Diamond Director and Above**



Monthly Capping Rs. 60,000/-

* Conditions Apply. For Details See SMGP Plan Booklet



Images shown are for illustration purpose only

**Leaders don't create
followers' leaders create
more leaders**

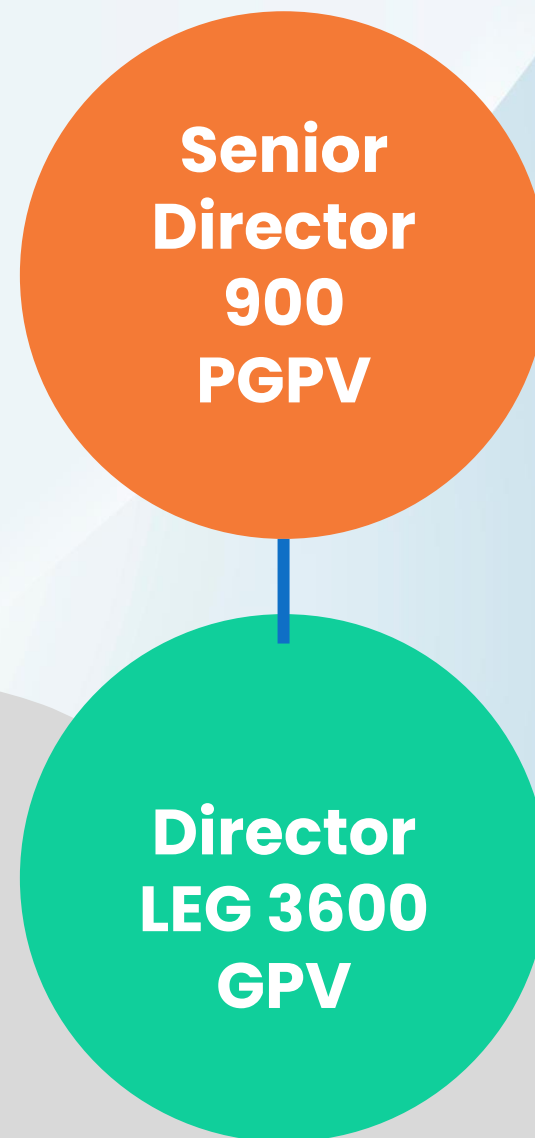
**Build More Leaders ...
Earn More Rewards**



Leadership

Bonus (LB)

- ✓ **Senior Director or Higher ,One 3600 GPV Leg with at least one PAT Director**
- ✓ **Paid monthly from 15 % BV Pool**



* Conditions Apply. For Details See SMGP Plan Booklet

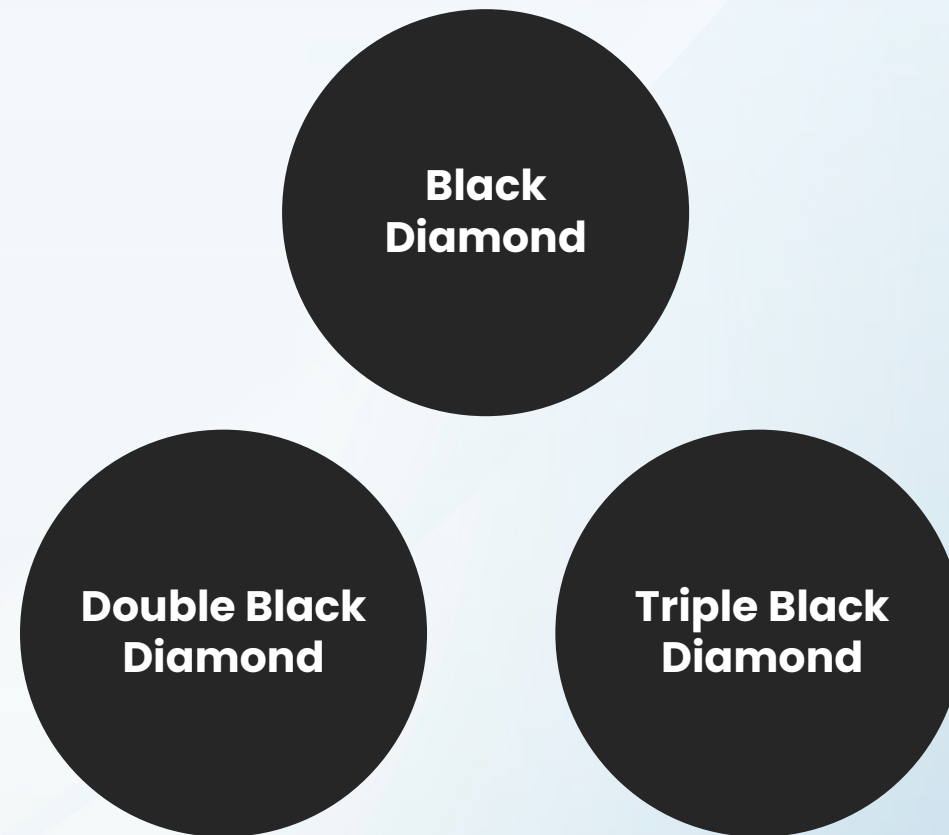
Black Diamond Bonus

0.7 % BV Pool

Eligibility:

- ✓ **PAT Black Diamond**
- ✓ **PAT Double Black Diamond**
- ✓ **PAT Triple Black Diamond**

Monthly Cap: Rs. 5 Lac



** Conditions Apply. For Details See SMGP Plan Booklet*

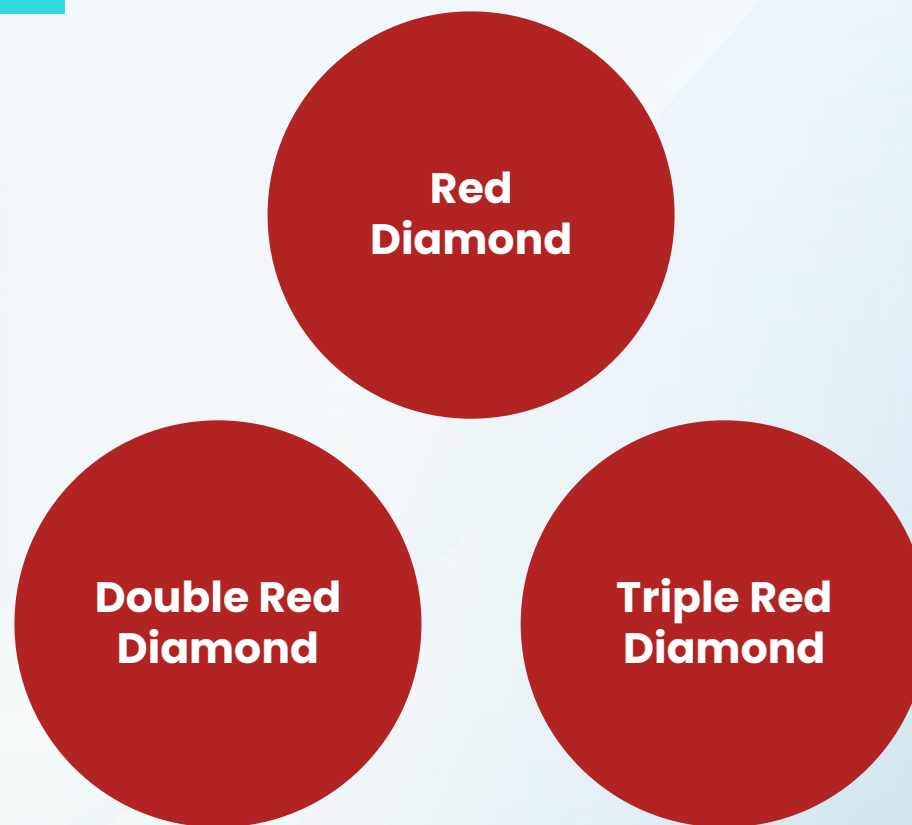
Red Diamond Bonus

0.3 % BV Pool

Eligibility:

- ✓ **PAT Red Diamond & Higher**
- ✓ **Paid Monthly**

Monthly Cap: Rs. 10 Lac



* Conditions Apply. For Details See SMGP Plan Booklet

<div> <div>Title</div> <div> <div>Income</div> <div></div> </div> </div>		01 Retail Profit Up to 20%	02 Samir Modi Super Bonus* 3% BV Pool	03 Performance Bonus* 5% - 11%	04 Director Bonus 16% BV Pool	05 Bike Bonus 3% BV Pool	06 National Travel Fund 4% BV Pool	07 World Travel Fund 3% BV Pool (40 K Monthly Cap)	08 Car Fund 4% BV Pool (50 K Monthly Cap)	09 House Bonus 2% BV Pool (60 K Monthly Cap)	10 Leadership Bonus 15%	11 Black. Diamond Bonus 0.7 % BV Pool (5 Lac Monthly Cap)	12 Red Diamond Bonus 0.3% BV Pool (10 Lac Monthly Cap)
	Qualification Requirement												
Consultant (0%)	GPV<60	✓											
Consultant (5%)	GPV 60 to < 300	✓	✓	✓									
Consultant (8%)	GPV 300 to <600	✓	✓	✓									
Consultant (10%)	GPV 600 to <900	✓		✓									
Consultant (11%)	GPV 900 to < 1200	✓		✓									
Director	PGPV: >=1200	✓		✓	✓	✓	✓						
Senior Director	PGPV: 900 Director Legs: 1	✓		✓	✓		✓				✓		
Executive Director	PGPV: 600 Director Legs: 2	✓		✓	✓		✓				✓		
Senior Executive Director	PGPV: 300 Director Legs: 3	✓		✓	✓			✓			✓		
Platinum Director	Director Legs: 4	✓		✓	✓			✓	✓		✓		
Diamond Director	Director Legs: 6	✓		✓	✓			✓	✓	✓	✓		
Black Diamond Director	Director Legs: 3 & SED Legs: 3	✓		✓	✓			✓	✓	✓	✓	✓	
Double Black Diamond Director	SED Legs: 3 Platinum Legs: 3	✓		✓	✓			✓	✓	✓	✓	✓	
Triple Black Diamond Director	Platinum Legs: 3 Diamond Legs: 3	✓		✓	✓			✓	✓	✓	✓	✓	
Red Diamond Director	Triple Black Diamond Legs: 6	✓		✓	✓			✓	✓	✓	✓		✓
Double Red Diamond Director	Red Diamond Legs: 6	✓		✓	✓			✓	✓	✓	✓		✓
Triple Red Diamond Director	Double Red Diamond Legs: 6	✓		✓	✓			✓	✓	✓	✓		✓

To earn Leadership Bonus you need to be minimum Senior Director with at least one leg having GPV of minimum 3600 with minimum one PAT Director or higher. PGPV is Personal Group Point Volume, includes your PPV and entire group's point volume excluding Director Legs National Travel Fund and World Travel Fund are accumulated to be used for company organized domestic and international trips. Car Fund is accumulated monthly to be used to Purchase Car. **Valid Directors are not eligible for Samir Modi Super Bonus (SMSB). To earn SMSB minimum PPV should be 60.

*To earn Performance Bonus minimum PPV required is 30. PPV Requirement for Director to Diamond Director is 60. PPV Requirement for Black Diamond and Higher is 120.

Live Life **of** **Significance**

- **Help people to Earn Money**
- **Noble business**



Success Principles

By **Modicare**

World Class Training Support



CLASSROOM



ONLINE



PHONE

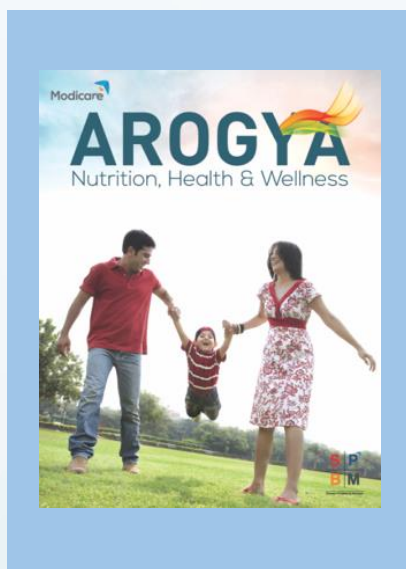
Success Principles

By **Modicare**

Training tools



Skin Type Tester Strips



Hindi & English



Hindi & English



Hindi & English



Hindi & English



English

ANSWER

To **YOURSELF**

IF NOT **MODICARE**, THEN WHAT?

IF NOT **YOU**, THEN WHO?

IF NOT **NOW**, THEN WHEN?

Journey of thousand miles
starts with a single step...

TAKE THE FIRST STEP!

Welcome
to
Modicare



SHURUAAT

10 KADAM AZADI KE

“With Every Step You Take,
I WILL TAKE
TWO”

